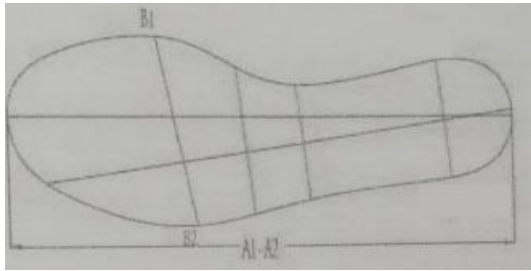




GK Fusion & GK Shadow Sizing Guide



How to measure heel to toe (as shown A1-A2):

1. Place your foot on a piece of paper
2. Mark the paper at the end of your largest toe and the end of your heel
3. Measure the distance between the two points

Important: Repeat this for the other foot and use the larger of the two measurements

If between sizes, we recommend sizing up to give your toes enough room

SIZE	Y10#	Y11#	Y12#	Y13#	1#	2#	3#	4#	4.5#	5#
LENGTH (MM)	158.630	167.090	175.550	184.010	192.470	200.930	209.390	217.850	222.080	226.310
LENGTH (IN)	6 1/4	6 5/8	6 15/16	7 1/4	7 5/8	7 15/16	8 1/4	8 5/8	8 3/4	8 15/16

SIZE	5.5#	6#	6.5#	7#	7.5#	8#	8.5#	9#	9.5#
LENGTH (MM)	230.540	234.770	239.000	243.230	247.460	251.690	255.920	260.150	264.380
LENGTH (IN)	9 1/8	9 1/4	9 7/16	9 5/8	9 3/4	9 15/16	10 1/8	10 1/4	10 7/16

SIZE	10#	10.5#	11#	12#	13#	14#
LENGTH (MM)	268.610	272.840	277.070	285.530	293.990	302.450
LENGTH (IN)	10 5/8	10 3/4	10 15/16	11 1/4	11 5/8	11 15/16